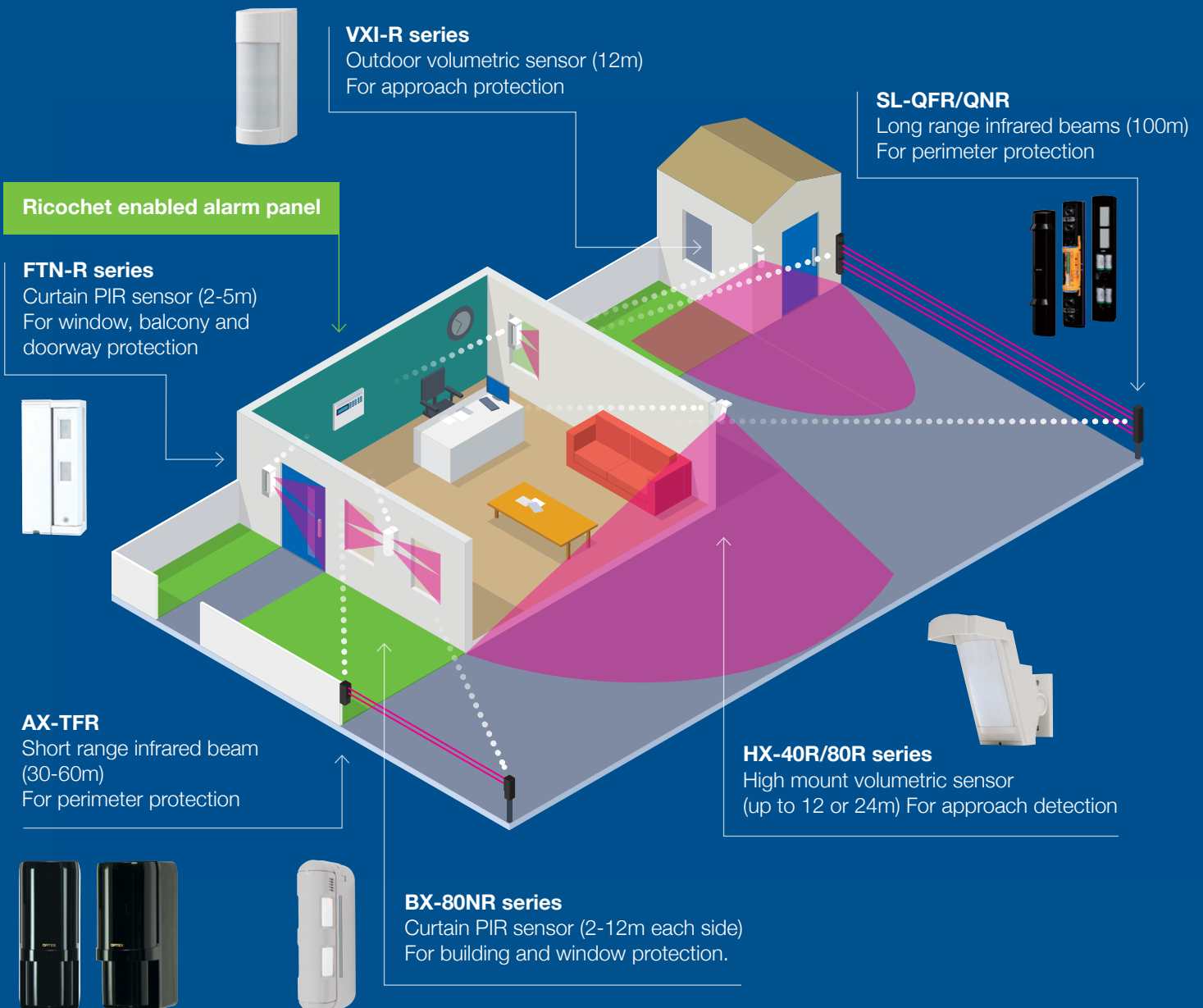


Combine OPTEX battery powered outdoor sensors with Ricochet[®] Mesh technology

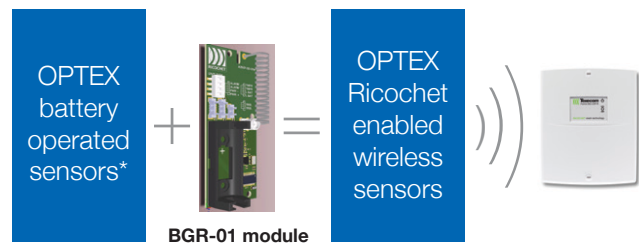
Create a complete wireless security system by linking outdoor detection to your Ricochet enabled alarm panels.



How to add OPTEX outdoor sensors to your wireless Ricochet enabled alarm panel

A Ricochet wireless module, the BGR-01, has been designed to connect any OPTEX outdoor battery-powered PIRs and active infrared beams to a Ricochet Premier Elite alarm panel, ver. 3.01 or higher. The panel will recognise the OPTEX sensors by model as soon as they are connected. The BGR-01 module fits inside the sensor's backbox and comes with the battery (CR123A) and all necessary cables required to connect it to the sensor.

The BGR-01 module is available to purchase from OPTEX's distribution channels as a separate item in UK and Ireland. For more information please contact us.





*See the list of the compatible outdoor battery operated sensors below





OPTEX outdoor sensors compatible with the Ricochet enabled BGR01 wireless module

The BGR-01 module can be purchased separately and integrated with all OPTEX outdoor battery-operated sensors listed below. For full functionality, it is recommended to install two BGR-01 per active infrared beam set, one for the transmitter and one for the receiver. Please note that two modules are necessary for the infrared beams, one for the transmitter and one for the receiver.

Battery powered active infrared beams (Two BGR-01 modules will be needed per beam set)

| Sensors | Detection range | Channel selectable frequencies | Device signalling to the wireless module | | | | Alarm | Low battery | Environmental output (DQ) | Tamper | | |
|-----------|-----------------|--------------------------------|--|-------------|---------------------------|--------|-------|-------------|---------------------------|--|--|--|
| | | | Alarm | Low battery | Environmental output (DQ) | Tamper | | | | | | |
| AX-100TFR | 30m | ● | ● | ● | ● | ● | ● | ● | ● |  |  | |
| AX-200TFR | 60m | ● | ● | ● | ● | ● | ● | ● | | | | |
| SL-350QFR | 100m | ● | ● | ● | ● | ● | ● | ● | | | | |
| SL-350QNR | 100m | – | ● | ● | ● | ● | ● | ● | | | | |
| | | | | | | | | | | AX series | SL series | |

Battery powered outdoor PIRs

| Sensors | Detection range | Type of detection | Combined PIR/ microwave | Small animal tolerance | Device signalling to the wireless module | | | | Alarm | Low battery | Anti-masking | Tamper | | |
|-----------|------------------------------|-------------------------|-------------------------|------------------------|--|-------------|--------------|--------|---|---|--------------|--------|--|--|
| | | | | | Alarm | Low battery | Anti-masking | Tamper | | | | | | |
| FTN-R | 2-5m | Curtain | – | ● | ● | ● | – | ● |  |  | | | | |
| FTN-RAM | | | – | ● | ● | ● | ● | | | | | | | |
| BX-80NR | 1-12m on each side (24m max) | Curtain | – | ● | ● | ● | – | ● | FTN series | BX series | | | | |
| VXI-R | 12m-90° | volumetric | – | ● | ● | ● | – | ● | | | | | | |
| VXI-RAM | 12m-90° | volumetric | – | ● | ● | ● | ● | ● |  |  | | | | |
| VXI-DRAM | 12m-90° | volumetric | ● | ● | ● | ● | ● | ● | | | | | | |
| HX-40RAM | 12m-85° | Volumetric (high mount) | – | ● | ● | ● | ● | ● | VXI series | HX series | | | | |
| HX-80NRAM | 24m narrow | Curtain (high mount) | – | ● | ● | ● | ● | ● | | | | | | |